

# NURSING PROGRAM MAP

## ASSOCIATE'S DEGREE IN NURSING (ADN)

Registered nurses in the state of Iowa can expect solid wages and rapid job growth, and nursing is considered a Bright Outlook occupation by O\*NET. See an advisor to learn more.



### ► PREREQUISITES (May not take more than twice.)

<u>New student orientation</u>	<u>Attend program conference prior to registration</u>	<u>Obtain CNA or HSP</u>	<u>Register</u>	<u>See advisor</u>	<u>TOEFL or HSC-160 (Non-native English speakers)</u>	<u>Register</u>	<u>State License Decision**</u>	<u>See advisor HSC-189 Orientation</u>	<u>Laptop &amp; scrubs</u>	<u>Submit program conference sheet</u>	<u>Background check &amp; compliance package</u>	<u>Register</u>
<b>TERM 1</b>				<b>TERM 2</b>				<b>TERM 3</b>				
BIO-151 NUTRITION	3	SOC-110 INTRODUCTION TO SOCIOLOGY	3	SPC-101 FUNDAMENTALS OF ORAL COMMUNICATION	3							
PSY-111 INTRODUCTION TO PSYCHOLOGY	3	PSY-121 DEVELOPMENTAL PSYCHOLOGY	3									
ENG-105 COMPOSITION I *	3	XXX-XXX HUMANITIES ELECTIVE (Study Abroad Opportunities)	3	BIO-186 MICROBIOLOGY W/ LAB	4							
◆ BIO-168 HUMAN A&P I W/ LAB	4	◆ BIO-173 HUMAN A&P II W/ LAB	4	◆ HSC-189 INTRODUCTION TO NURSING	4							
<b>TOTAL CREDITS</b>	<b>13</b>	<b>TOTAL CREDITS</b>	<b>13</b>	<b>TOTAL CREDITS</b>	<b>11</b>							

### ► TECHNICAL PROGRAM (Required admission GPA: 2.75. Program slots are limited and competitive.)

<u>FAFSA</u>	<u>PNN-228 Orientation</u>	<u>Register</u>	<u>Register</u>	<u>LPN boards</u>	<u>Register</u>	<u>Apply for graduation</u>	<u>RN to BSN opportunities</u>	<u>RN boards</u>
<b>TERM 1</b>			<b>TERM 2</b>		<b>TERM 3</b>		<b>TERM 4</b>	
◆ PNN-228 FOUNDATIONS I	6	◆ PNN-229 FOUNDATIONS II	4	◆ ADN-171 CONCEPTS OF NURSING	5	◆ ADN-180 ADVANCED CONCEPTS OF NURSING	4	
◆ PNN-721 FOUNDATIONS I CLINICAL	2	◆ PNN-723 FOUNDATIONS II CLINICAL	2	◆ ADN-740 CONCEPTS CLINICAL	3	◆ ADN-760 ADVANCED CONCEPTS CLINICAL	4	
◆ PNN-293 HEALTH ASSESSMENT	3	◆ PNN-446 CARE OF THE GROWING FAMILY	4	◆ ADN-176 ADVANCED CONCEPTS OF MENTAL HEALTH	4	◆ ADN-183 ADVANCED CONCEPTS IN OB/PEDS	4	
◆ PNN-280 PHARMACOLOGY I	2	◆ PNN-282 PHARMACOLOGY II	2					
<b>TOTAL CREDITS</b>	<b>13</b>	<b>TOTAL CREDITS</b>	<b>12</b>	<b>TOTAL CREDITS</b>	<b>12</b>	<b>TOTAL CREDITS</b>	<b>12</b>	

◆ = "Critical Courses" require minimum B- grade. GPA of 2.75 in prereqs with minimum C grade in each course. May take each prerequisite course only twice. Prereqs for HSC-189 are ENG-105, A&P I, CNA or HSP, and program conference.

**\*Math placement - one of the following is required:**

- ALEKS algebra score ≥ 30
- ACT math score of ≥ 19
- College-level math course equivalency
- Earned A.A. or bachelors degree

**\*\*State License Decision:**

If you are planning to work outside of the state of Iowa, please meet with the Dean of Nursing, to make sure you are familiar with Nursing licensure requirements of that particular state.

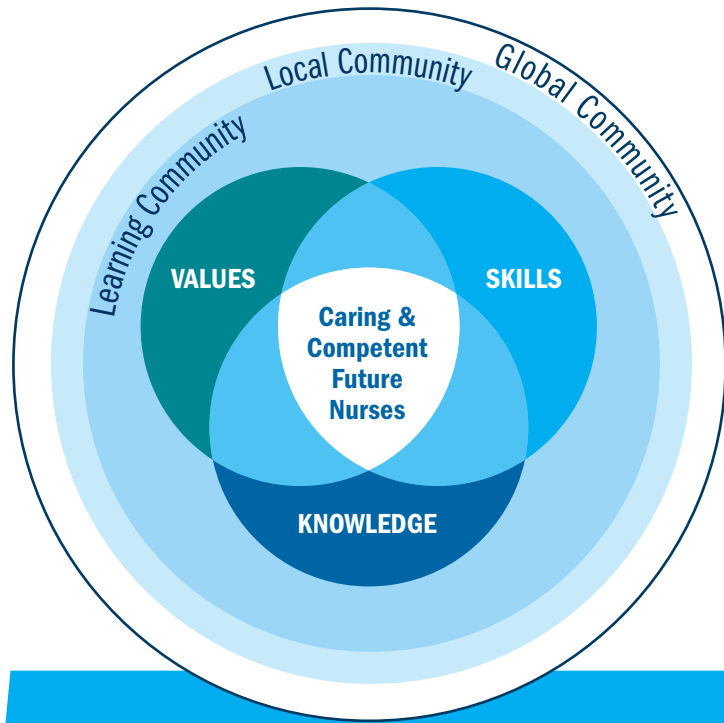


Plan your suggested schedule of courses with MyHub.

[www.kirkwood.edu/myhub](http://www.kirkwood.edu/myhub)

Plan of Study

\* Required before enrolling in HSC-189.



**Patient centered Care, Teamwork and Collaboration,  
Evidence based Practice, Quality Improvement,  
Safety, Informatics**

*Institute of Medicine, Quality and Safety Education for Nurses*

---

### **KIRKWOOD NURSING DEPARTMENT MISSION**

Guiding, advising, and educating caring, competent nurses for the future!

---

### **KIRKWOOD NURSING PROGRAM OUTCOMES**

The Kirkwood Nursing program graduate will achieve the following competencies:

- Patient-centered Care
  - Teamwork
  - Evidence-based Practice
  - Quality Improvement
  - Safety
  - Informatics
  - Leadership
  - Professionalism
-